

AL200MCC

Refurbished Flight training device Technical specifications & Commercial Offer

Customer: Reference Number: OC.2015-11-18-AL200MCC-AJ-SLCC-V1

Offer validity: 2 months

Indicative terms – Subject to contract

The AL 200 MCC covers the entire course from PPL to MCC.



Pricing information: AL 200 MCC refurbished Unit

Product description

AL 200 MCC Simulator AATD compliant

- Two seat aircraft cockpit
- Single engine piston: Piper PA-28 / Socata TB20 / BE24 Sierra / Cessna 172 / Cessna 182
- Twin engine piston: Cessna T303 / Beech BE-58 Baron / Piper PA-44 180 Seminole / Piper PA-34 Seneca I / Piper PA-34 200T Seneca II / Piper PA-34 220T Seneca V / Piper PA-31 350 Navajo / Grumman GA-7 Cougar, PA / Beech BE-76 Duchess
- Twin engine turboprop: Piper PA-31T Cheyenne II / Beech BE-200 / ATR-42 300 Generic
- Twin engine jet: Cessna Citation II 550 Generic
- 208° x 49° HD Visual system with relief and coastal lines
- GNS 430 avionics & Nav Database
- Graphical touch screen Instructor station
- Full documentation: User, maintenance, flight operator manuals, check lists.
- Maintenance spare parts kit

Technical training at Alsim location

- Qualification training
- Maintenance training
- Instructor training

Delivery time / Transport / Installation

2 months EXW

Transport (Sea/Truck) DAP (Delivered at Place)

Installation

Warranty

One year warranty

1 year basic Contract

TOTAL PRICE	\$120.000
--------------------	------------------

Payment schedule:

At Order :

Before shipment :

After installation :

Maintenance contract – After the Warranty period

Services	Warranty	Without Contract	Basic
Alsim Hotline, VPN, Phone, Techlog	'V	160 € / hour	'V
Repairs / Labour Service <i>(at Alsim premises)</i>	'V	160 € / hour	'V
Navigation Database – 4 Cycles / yr <i>(including latest modeled airports)</i>	'V	LILILILII € / year	'V

Alsim Courses : Maintenance, Instructor, Qualification <i>(on a yearly basis at Alsim's premises)</i>		900 € / day	'V
Yearly On-Site Labour - 1 Day <i>(expenses and travel time not included)</i>		900 € / day	'V
30% Off Parts & Spares	N/A	On quote	'V
Hardware loans <i>(while yours are repaired / replaced)</i>	'V	On quote	'V
Price (yearly basis)			10 000 \$

The AL 200 Range

Our state-of-the-art Flight Training Device is the culmination of 15 years of Research and Development. It is also the combination into a single machine of our proven Flight Models and systems from our line of FTD we have delivered and certified worldwide.

	ATPL	PPL	CPL	IR	ME	MCC
AL 200 MCC	X	X	X	X	X	X

The result is a FTD that can replace several different devices previously operated by flight schools to meet the requirements of different stages of training leading to a position as an Airline first officer.

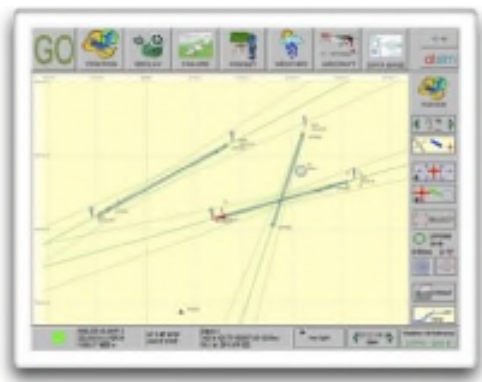
The AL 200 / AL 200 MCC Features

Features
Single Engine Piston Piper PA-28
Single Engine Piston Socata TB 20 Single Engine Piston BE24 Sierra
Single Engine Piston Cessna 172
Single Engine Piston Cessna 182
Multi Engine Piston Cessna T 303
Multi Engine Piston Beech BE-58 Baron
Multi Engine Piston Piper PA-44 180 Seminole
Multi Engine Piston Piper PA-34 Seneca I
Multi Engine Piston Piper PA-34 200T Seneca II
Multi Engine Piston Piper PA-34 220T Seneca V
Multi Engine Piston Piper PA-31 350 Navajo Multi Engine Piston Grumman GA-7 Cougar
Multi Engine Piston Beech BE-76 Duchess
Multi Engine Turboprop Piper PA-31T Cheyenne II
Multi Engine Turboprop Beech BE-200
Multi Engine Turboprop ATR-42 300 Generic
Twin Corporate Jet Cessna Citation II 550 Generic
Overhead (Turboprop & Jet)
GNS 430 208° x 49° Panoramic visual system
Graphical touch screen instructor station

Instructor station

Alsim designed its instructor operating system with the instructor's comfort in mind. It is a valuable complement to the flight trainer and an irreplaceable assistant for the i

The software interface is so easy to use the instructor doesn't need computer skills to provide excellent training!



The main characteristics of the instructor station:

- Enclosed instructor station
- 15" touch screen
- Color printer
- Headset
- Startup panel
- Emergency knobs (x2)

The instructor operating system will allow the following functions:

- Map display
- Positioning / repositioning
- Weather conditions adjustment
- Flight model selection
- Failure menu

Visual system



The ALX is provided with HDVS (Alsim Visual System):

- Vertical field of view: 49°
- Horizontal field of view: 208°
- 1920 x 1200 projectors (3 projectors)
- Frame rate: 60 fps
- Worldwide texture modeling
- World wide relief database
- Coastal lines

The followings parameters can be adjusted:

- Visibility
- Day/night
- Cloud layers
- Rain / snow / hail
- RVR

The standard panoramic visual system consists of a circular screen, 3 projectors and distortion image software.

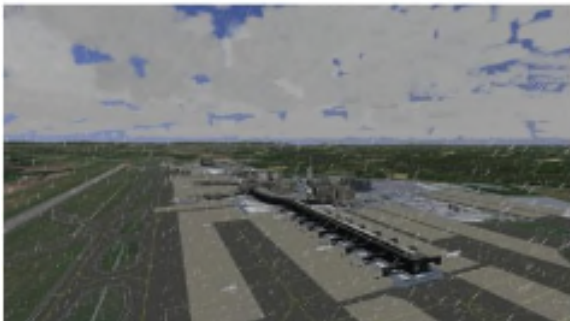
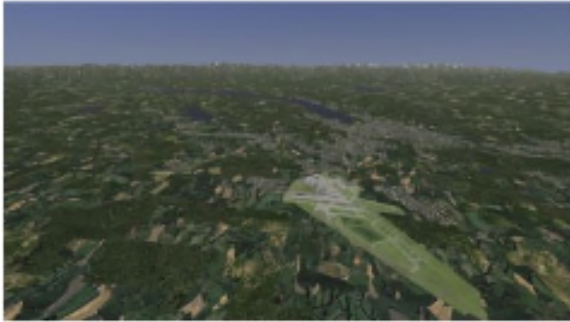
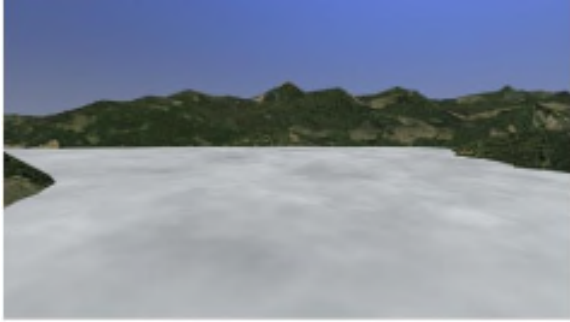
Alsim is proud to design and produce its own visual system software and hardware in 208° x 49° panoramic fields.

We also provide detailed airport environment for your home base including ramp, hangar and other facilities for more realism.

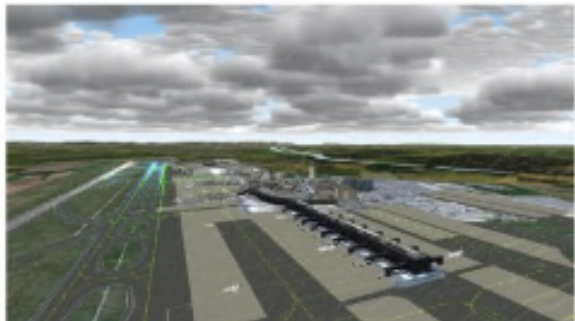
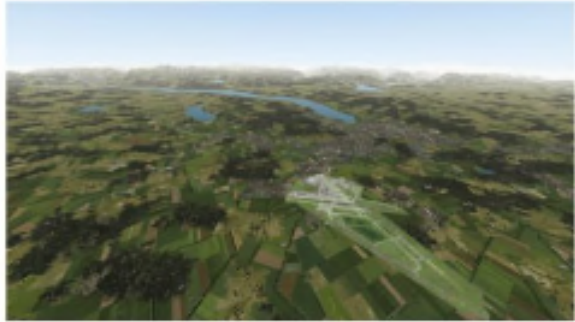
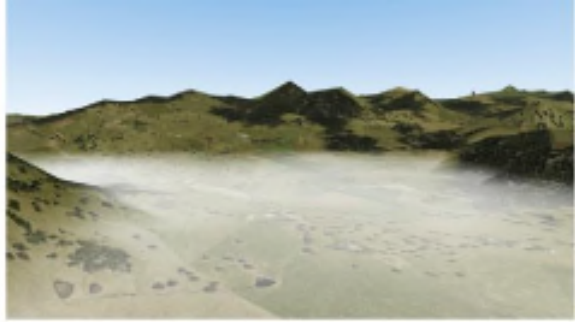
Day and night operations are complemented with a full range of weather scenarios including freezing conditions, wind shears, CAT II and turbulence.

New Visual System

Before (XPVS)



After (HDVS)



Documentation & Certification

The documentation provided with the flight-training device is:

- Instructor manual
- Flight operating manuals:
- Maintenance manual
- Qualification Test Guides (QTG).

These manuals are delivered in a paper version and PDF files.

Qualification

The AL200MCC is qualified according to FAA rules as well as many other countries:

- FAA - AATD

Trainings

Maintenance Training

To be operational as quickly as possible

Maintenance training will be provided at Alsim's manufacturing plant for 2 technicians of your staff. During their training, the technicians will train on the actual FSTD to be installed at your location. The technicians will be able to see how each part and other components are manufactured right here at the factory. The technicians will be able to interact with the entire staff at Alsim, from executive staff to programmers and our technicians. Recurrent training programs may be organized yearly to refresh, renew and upgrade skills learned during the initial training program.

FSTD Qualification Training

Qualification Process

A two-day training is provided at Alsim's facilities to enable our customer to manage the certification process smoothly. Alsim's Qualification team will assist you for the initial certification process to insure you get the maximum credit hours.

How to be efficient from the Day 1

A Flight Instructor training will be provided at Alsim's facilities for your instructor. Your flight instructor will be trained on a similar FSTD to be installed at your premises. He /she will receive in-depth training on the IOS to master the systems that power the flight simulator.

Practice training

Actual flight scenarios on all flight models will be covered to add realism to the training sessions. Your Flight Instructor will receive his/her own copy of the simulator Operations Manual that covers every single switch, functions and troubleshooting guide.

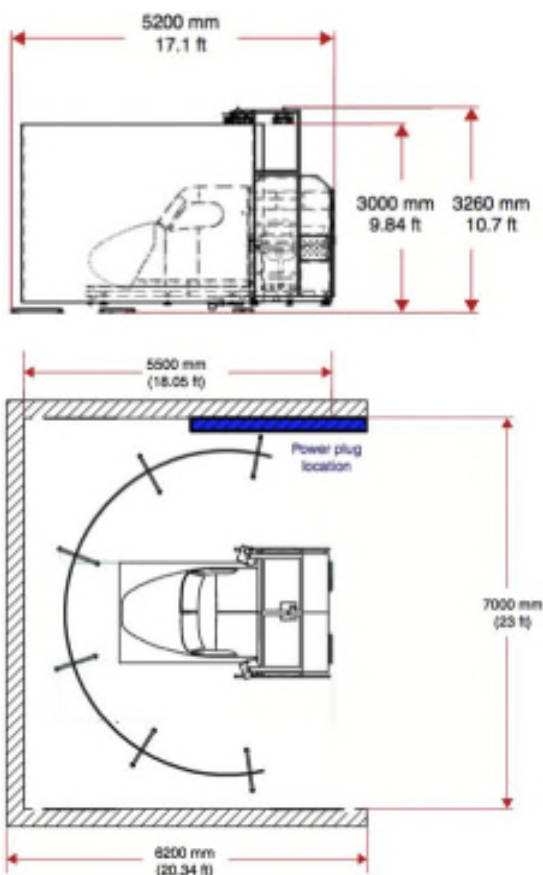
Installation

Alsim's offer includes:

- Transport
- Installation
- Initial certification assistance.
- Two years warranty

The installation is performed by two of our technicians. You and your team will receive the installation requirements before hand and will send back to our team for analysis. All is foreseen and well prepared before the installation

Dimensions for the 208° ALX Panoramic Visual System:



Access door dimensions:

The access door from outside the building to the simulator room should be: (including intermediate doors or corridor)

Door width: 1,91 m
Door height: 2,14 m

Room dimensions:

Room width: 7,00 m
Room length: 5,50 m
Room height: 3,50 m
Room width: 7,00 m

Detailed Airports

Australia

- YSSY – Sydney
- YBBN – Brisbane
- YBCG – Gold Coast Coolangatta
- YBMC – Sunshine Coast Maroochydore

Austria

- LOWL – Linz
- LOWW – Vienne

Belgium

- EBAW – Anvers
- EBBR – Brussels
- EBOS – Ostend

Canada

- CYBW – Springbank
- CYKF – Waterloo
- CYMM – Fort Mc Murray
- CYP A – Prince Albert
- CYQR – Regina
- CYSF – Stony Rapids
- CYVR – Vancouver International
- CYYC – Calgary
- CYVC – La Ronge
- CYVQ – Yorkton
- CYVT – Buffalo Narrows
- CYXE – Saskatoon
- CYXU – London

Croatia

- LDZD – Zadar

Czech Republic

- LKPR – Prague

Finland

- EFHK – Helsinki Vantaa
- EFHF – Helsinki Malmi

France

- LFPG – Paris Charles de Gaulle
- LFLB – Chambéry
- LFRS – Nantes
- LFBA – Agen
- LFOX – Etampes
- LFLP – Lognes
- LFMD – Cannes
- LFMT – Montpellier
- LFML – Marseille
- LFMU – Beziers
- LFMV – Avignon

- LFRB – Brest
- LFBD – Bordeaux
- LFBE – Bergerac
- LFBL – Limoges
- LFBO – Toulouse
- LFBP – Pau
- LFBX – Périgueux
- LFBZ – Biarritz
- LFCR – Rodez
- LFMP – Perpignan
- LFPN – Toussus-Le-Noble
- LFRN - Rennes

Germany •

- EDMA – Augsburg
- EDDL – Düsseldorf
- EDDF – Frankfurt
- EDDH – Hamburg
- EDDM – München

India

- VOMM – Chennai
- VOBL – Bangalore

Iceland

- BIAR - Akureyri
- BIRK – Reykjavik
- BIKF – Keflavik

Italy

- LICA – Lamezia
- LICC – Catania
- LICJ - Palermo
- LIEO – Costa Smeralda
- LILV – Valtrompia
- LIMC – Milan Malpensa
- LIME – Orio Al Serio
- LIMF – Torino
- LIML – Milan Linate
- LIPO – Montichiari
- LIPZ – Venezia
- LIRA – Ciampino
- LIRU - Urbe
- LIRQ – Firenze-Peretola
- LICR – Reggio Calabria

Jordan

- OJAQ – Aqaba King Hussein
- OJAM – Amman Marka

Lybia

- HLLT – Tripoli International Airport

Malaysia

- WMKC – Kota Bahru
- WMKL – Langkawi
- WMKK – Kuala Lumpur – Sepang
- WMKI – Sultan Azlan Shah
- WMKJ – Johor Bahru

The Netherlands

- EHAM – Amsterdam (Schipol)
- EHGG – Groningen
- EHLE – Lelystad
- EHBK – Maastricht
- EHRD – Rotterdam

Nigeria

- DNMM – Lagos
- DNZA – Zaria
- DNAA – Abuja
- DNKN – Kano

Norway

- ENDU – Bardufoss
- ENTC – Tromsø

Poland

- EPWA – Warsaw
- EPRZ – Rzeszów
- EPKK – Kraków
- EPKT – Katowice
- EPGD – Gdańsk
- EPKS – Poznań

Puerto Rico

- TJSJ – San Juan

Qatar

- OTBD – Doha
- OTBK – Alkhor

Spain

- LEMG – Malaga
- LEAM – Almeria
- LEGR – Grenada

South Africa

- FAJS – Johannesburg
- FAWB – Wonderboom

South Korea

- RKPC – Jeju
- RKSI – Incheon
- RKSS – Seoul

Switzerland

- LSZH – Zurich

Tunisia

- DTTA – Tunis Carthage

Turkey

- LTAC – Ankara Esenboga
- LTAI – Antalya
- LTBY – Eskisehir

Thailand

- VTUK – Khon Kaen
- VTUI – Sakhorn Nakhon
- VTUV – Roi Et
- VTBS – Bangkok Suvarnabhumi
- VTCC – Chiang Mai
- VTUW – Nakhon Phanom
- VTUD – Udon Thani
- VTUU – Ubon Ratchatani

United Arab Emirates

- OMAA – Abu Dhabi
- OMDB – Dubai
- OMFJ – Fujairah

United Kingdom

- EGGD – Bristol
- EGHH – Bournemouth
- EGLL – Heathrow
- EGNX – East Midlands
- EGTE – Exeter
- EGTC – Cranfield
- EGKA – Shoreham
- EGSG – Stapleford

United States

- C20 – Andrews University
- KORD – Chicago
- KSBN – South Bend
- KHWO – North Perry

Vietnam

- VVCR – Cam Ranh
- VVTS Ho Chi



532 Quail Hill Dr, • Debary, FL 32713 • Cell
386.748.1900 • Office 386.775.7012

www.simservices.biz • mitch@simservices.biz
www.airlinetrainingcounselor.com •
mitch@airlinetrainingcounselor.com